

P6151 NEW

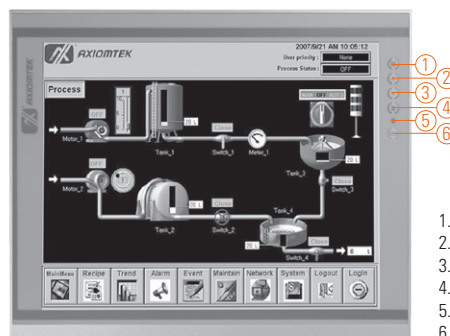
15" XGA TFT Industrial LCD Monitor with Digital IO

Features

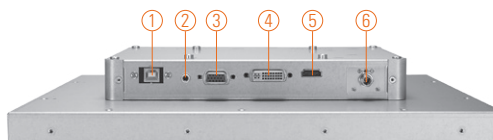
- 15" XGA TFT LED backlight LCD
- Resistive touchscreen with 420 nit high brightness
- Full range screw-type (locked) AC-in or 12V/24V DC-in (option)
- HDMI, DVI-D and VGA with multi-signal inputs
- Built-in speakers



▲ Modularized design



1. Menu
2. SEL+
3. SEL-
4. Exit
5. Power LED
6. Power switch



1. T/S port
2. Line-in
3. VGA
4. DVI-D
5. HDMI
6. Power

Introduction

The P6151 is an ultra slim industrial LCD monitor, which adopts 15-inch 420 nits XGA LED backlight LCD display and supports multi-signal interfaces including DVI, VGA and HDMI. Featuring, screw-type adaptor plug design, and 12/24V DC-In means it is fit for all kinds of industrial environments. With the compact mechanism design, users can enjoy free from space constraint. It is especially suitable for POI/POS, excellent HMI and all kinds of heavy-duty industrial fields.

Specifications

Front Bezel	NEMA 4/12 (IP65)-compliant, metal front bezel	
Mounting	Panel mount, wall mount, rack mount or VESA arm FPMPMI mounting (video electronics standards association Flat Panel monitor physical mounting interface)	
LCD Panel	Display	15" XGA TFT LCD
	Max. Resolution	1024 x 768
	Max. Colors	16.7M
	Active Area (mm)	304.128 x 228.096
	Pixel Pitch (mm)	0.297 x 0.297
	Response Time	16ms
	Backlight	LED backlight
	Backlight MTBF	30,000 hrs
	Viewing Angle (H/V)	160°/160°
	Contrast Ratio	800 (TYP.)
Brightness (cd/m ²)	420 nits	
Display Control	OSD (on screen display)	
Display Mode	VGA 640 x 350 (70Hz), VGA 640 x 480 (60/72/75Hz), VGA 720 x 400 (70Hz), SVGA 800 x 600 (60/72/75Hz), XGA 1024 x 768 (60/72/75Hz)	
Input Signal	DVI-D	
	VGA	
	HDMI	
	Touchscreen: Serial RS-232 or USB interface	

Specifications

I/O Connectors	1 x RS-232 or USB for touchscreen version 1 x DVI-D 1 x VGA 1 x HDMI 1 x Screw-type DC power input	
Power Adapter	Screw-type external AC/DC power adapter	
Power Consumption	15 W	
Touchscreen	Thickness	Resistive: 3.2 mm
	Light Transmission	Resistive: 80%
	Power Consumption	Resistive: +5V @ 100mA
	Touch Life	Resistive: 35 million touches Controller interface: RS-232 D-type 9-pin male connector or USB
Dimensions	335 mm (13.19") (W) x 58.5 mm (2.30") (D) x 261.5 mm (10.29") (H)	
Packing Dimensions	490 mm (19.30") (W) x 166 mm (6.54") (D) x 502 mm (19.76") (H)	
Weight (net/gross)	3.08 kg (6.79 lb)/ 4.58 kg (10.1 lb)	
Environment	Operating temperature: 0°C ~ +50°C (+32°F ~ +122°F) Relative humidity: 20%~90% @ 40°C, non-condensing	
Packing List	1 x VGA cable 1 x RS232 or USB cable for touchscreen (for touch version) 1 x Audio cable 1 x EU/US power cord (for AC version)	
Certificate	CE	

Ordering Information

AC Power	Resistive (RS-232)	P6151PR-AC-RS-US-EU
	Resistive (USB)	P6151PR-AC-U-US-EU
	Glass	P6151PG-AC-US-EU
12V/24VDC Power	Resistive (RS-232)	P6151PR-DC-RS
	Resistive (USB)	P6151PR-DC-U
	Glass	P6151PG-DC

Optional Accessories

5946L203800E	HDMI cable
5946L1713400E	DVI cable
82261510190E	Panel mount kit
82231770050E	Wall mount kit
E226171106	Desktop stand

Dimensions

