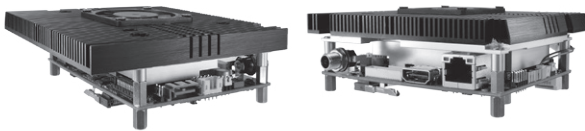


# PICO512 NEW

Pico-ITX SBC with 7th Gen Intel® Core™ i7/i5/i3 & Celeron® Processor, HDMI/LVDS and LAN

## Features

- 7th Gen Intel® Core™ i7/i5/i3 and Celeron® processor
- 1 DDR4 SO-DIMM, up to 16GB
- 1 PCI Express Mini Cards
- Intel® AMT 11 supported



▲ Assembly view



### Core System

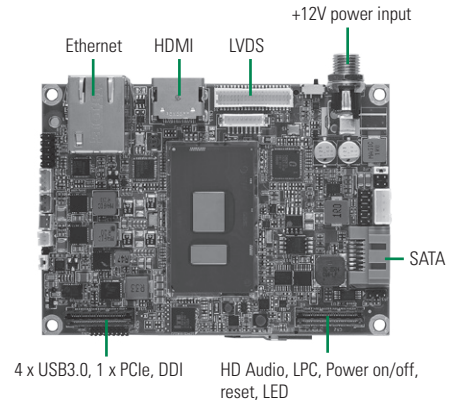
CPU	7th generation Intel® i7/i5/i3 & Celeron® processor onboard
System Memory	1 x 260-pin DDR4-2133 SO-DIMM, up to 16GB
Chipset	N/A
BIOS	AMI
SSD	N/A
Watchdog Timer	65535 levels, 1 ~ 65535 sec.
Expansion Interface	1 x full-size Mini PCI Express Mini Card with mSATA 1 x PCIe x1, 1 x LPC, 1 x DDI, 4 x USB 3.0, 1 x HD audio and 1 x SMBus (through expansion connector)
Battery Lithium	Lithium 3V/220mAh
Power Input	DC Jack +12V DC-in only AT Auto Power On function supported
Power Requirements	i7-7600U: +12V @ 2.5A i5-7300U: +12V @ 2.4A i3-7100U: +12V @ 2.2A CEL-3965U: +12V @ 1.7A
Size	100 x 72 mm
Board Thickness	1.6 mm
Temperature	-20°C ~ +70°C (-4°F ~ +158°F), operation
Relative Humidity	10% ~ 95% relative humidity, non-condensing

### I/O

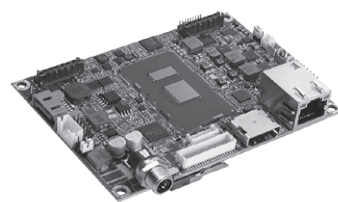
MIO	N/A
SATA	1 x SATA-600
Hardware Monitoring	Detect CPU/system temperature, voltage and fan speed
Ethernet	1 port 10/100/1000 Mbps supports Wake-on-LAN, PXE Boot ROM with Intel® i219LM
Audio	N/A
USB	1 x USB 2.0
I <sup>2</sup> C	I <sup>2</sup> C Bus for advanced monitoring/control
SMBus	N/A
Digital I/O	8 channels IN/OUT programmable
TPM	ST ST33TPM12LPC with TPM1.2 compliant

### Display

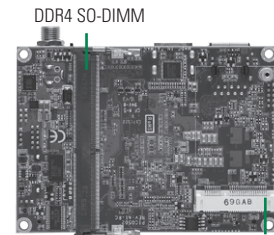
Chipset	Intel® HD graphics
Memory Size	Share system memory
Display Interface	1x HDMI 1 x LVDS; 18/24-bit single/dual channel



4 x USB3.0, 1 x PCIe, DDI HD Audio, LPC, Power on/off, reset, LED



▲ Side view



▲ Rear view

Full-size PCI Express Mini Card with mSATA supported

### Packing List

#### Standard

Quick installation guide, User's Manual/Utility CD and accessories

#### Accessories

Part Number	Description
59403208000E	SATA cable
594P8800600E	SATA power cable
59190400500E	Fan cable
594P8802810E	USB cable
5078H500000E	Heatspreader
5078H500100E	Cooler

### Ordering Information

#### Standard

PICO512HG-i7-7600U (P/N: E38H512100)	Pico-ITX SBC with Intel® Core™ i7-7600U HDMI/LVDS, 1 GbE LAN, 1 USB
PICO512HG-i5-7300U (P/N: E38H512101)	Pico-ITX SBC with Intel® Core™ i5-7300U, HDMI/LVDS, 1 GbE LAN, 1 USB
PICO512HG-i3-7100U (P/N: E38H512102)	Pico-ITX SBC with Intel® Core™ i3-7100U, HDMI/LVDS, 1 GbE LAN, 1 USB
PICO512HG-Celeron-3965U (P/N: E38H512103)	Pico-ITX SBC with Intel® Celeron® 3965U, HDMI/LVDS, 1 GbE LAN, 1 USB

#### Optional

AX93A00 (P/N: E393A00100)	I/O board for 1 x RS-232/422/485, 1 x RS-232, 4 x USB 3.0, 1 x VGA, 1 x Audio
AX93A01 (P/N: E393A01100)	I/O board for 1 x RS-232/422/485, 1 x RS-232, 4 x USB 3.0, 1 x HDMI, 1 x Gigabit LAN
AX93A02 (P/N: E393A02100)	I/O board for 1 x RS-232/422/485, 1 x RS-232, 4 x USB 3.0, 1 x Audio
AX93A09 (P/N: E393A09100)	I/O board for 1 x RS-232/422/485, 1 x RS-232, 4 x USB 2.0, 1 x Audio

Embedded SBCs > Pico-ITX

0  
1  
2  
3  
4  
5  
6  
7

