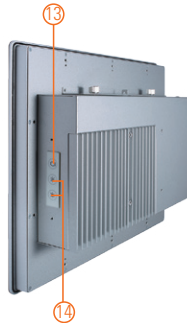
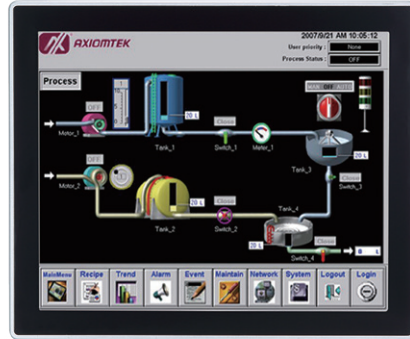


GOT3177T-311-FR NEW

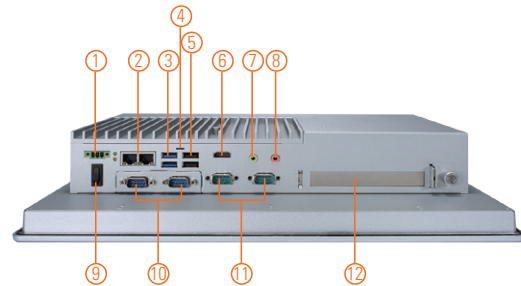
17" SXGA TFT Flat Bezel Expandable Touch Panel Computer with Intel® Pentium® Processor N4200 (0°C to +60°C)

Features

- 17" SXGA TFT flat resistive touch
- Fanless and modularized design
- Intel® Pentium® processor N4200 (Apollo Lake-M)
- 2.5" SATA HDD and mSATA
- WLAN module & antenna (optional)
- 2 Gigabit LAN, 2 USB 2.0, 2 USB 3.0, 4 COM Port and 1 PCIe riser card expansion slot (optional)
- IP65 front bezel
- Supports panel mount and optional VESA arm/desktop stand/wall mount



▲ Rear view



1. Terminal block for DC power input
2. Ethernet x 2
3. USB 3.0 x 2
4. AT/ATX selectable switch
5. USB 2.0 x 2
6. HDMI output
7. Audio (Line-out)
8. Audio (Mic-in)
9. Power switch (ATX)
10. COM x 2 (cable)
11. COM x 2 (onboard)
12. PCIe riser card expansion slot x 1 (optional)
13. Backlight switch
14. Brightness adjust +/-



▲ Top view



Introduction

The GOT3177T-311-FR adopts a 17-inch SXGA LCD and supports Intel® Apollo Lake processor. By supporting a wide range operating temperature from 0°C ~ +60°C, it can be used in harsh environment. The rugged industrial panel PC supports low power Intel® Pentium® processor N4200. It also provides 2 PCI Express Mini Card slots for 3G, wireless network connectivity and 1 PCIe riser card slot (optional) for more expansions. The 17" flat front bezel touch panel computer is suitable for transportation, heavy-duty industry, smart factory automation, and oil pipe monitoring systems.

Wide Temperature Range

The Intel® Apollo Lake-based GOT3177T-311-FR applies unique extended temperature technology with wide temperature range support as we as fanless operation. It also has a compact design for harsh environment.

WLAN Antenna Supported (optional)

The 17" SXGA IP65 industrial panel PC, GOT3177T-311-FR, provides 2 PCI Express Mini Card slots and WLAN/3G antennas for wireless network connectivity.

Specifications

Front Bezel	IP65 front bezel	
LCD Panel	Display Type	17" SXGA TFT LCD
	Brightness (cd/m ²)	350 nits
	Resolution	1280 x 1024
Main System	CPU	Intel® Pentium® processor N4200 4C @1.6 GHz (Apollo Lake-M)
	Chipset	SoC Integrated
	System Memory	1 x 204-pin DDR3L-1333/1600 SO-DIMM, up to 8GB
	BIOS	AMI UEFI BIOS
	Storage	1 x 2.5" SATA HDD 1 x mSATA
	Watchdog Timer	255 levels, 0 ~ 255 sec.
	Onboard Graphics	Integrated Intel® HD Graphics

Specifications

I/O Connector	2 x RS-232 2 x RS-232/422/485 (default RS-232) 2 x Audio (Line-out/Mic-in) 2 x USB 2.0 2 x USB 3.0 2 x 10/100/1000 Mbps Ethernet (Intel® i210IT)
Expansion Interface	1 x PCIe mini card slot (with SIM slot, full-size) 1 x PCIe mini card slot (supports mSATA, full-size) 1 x PCIe riser card slot (optional)
Touchscreen	Flat resistive touch
Power Supply	DC version: 9 ~ 36 VDC
Power Consumption	69W
Dimensions	398.02 mm (15.64") (W) x 59.9 mm (2.36") (D) x 330.44 mm (13.01") (H)
Packing Dimensions	510 mm (20.08") (W) x 190 mm (7.48") (D) x 540 mm (21.26") (H)
Weight (net/gross)	5.7 kg (12.6 lb) / 8.0 kg (17.6 lb)
Environment	Operating temperature: 0°C ~ +60°C (+32°F ~ +140°F) Relative humidity: 20% ~ 90% @ 40°C; non-condensing Operation vibration: 1.0 G, 10 ~ 500Hz
Certificate	CE

Ordering Information

GOT3177T-311-FR-DC	17" SXGA TFT fanless touch panel computer with Intel® Pentium® processor N4200 1.6 GHz quad core, 5-wire flat resistive touch screen and 9 ~ 36 VDC terminal block connector
--------------------	------------------------------------------------------------------------------------------------------------------------------------------------------------------------------

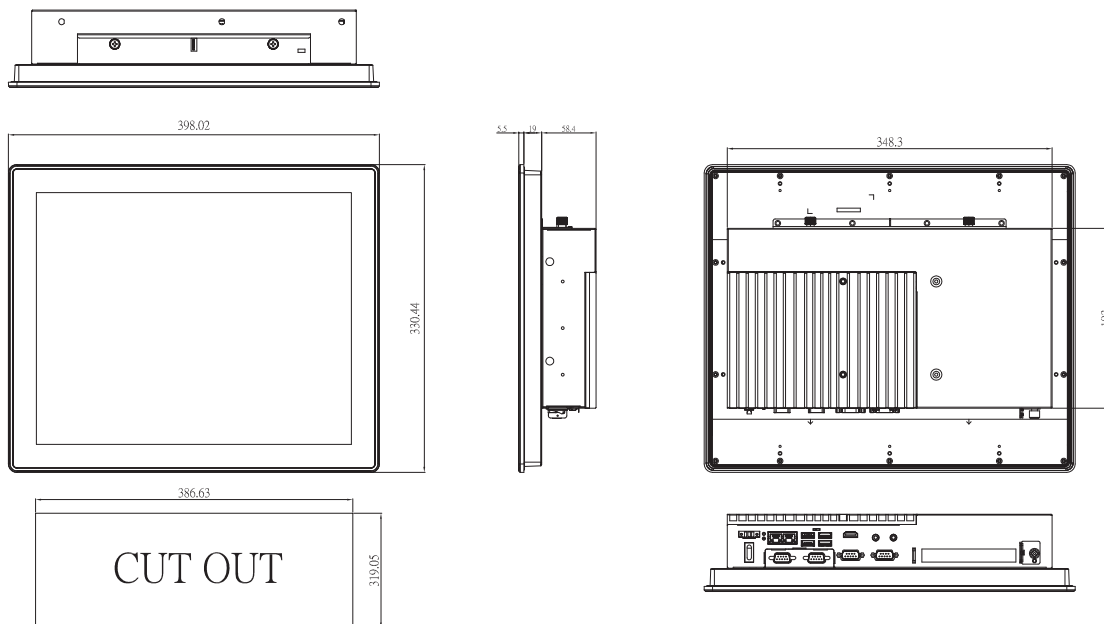
Optional EOS Installation

Windows® 10 IoT Enterprise

Optional OS Installation

Windows® 10

Dimensions



Heavy-duty
Fanless
Touch Panel
Computers

0

1

2

3

4

5

6

7

8

9

