

# P61510 NEW

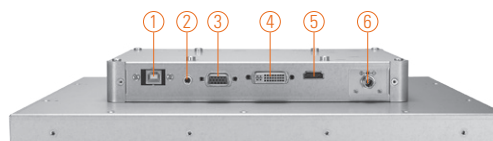
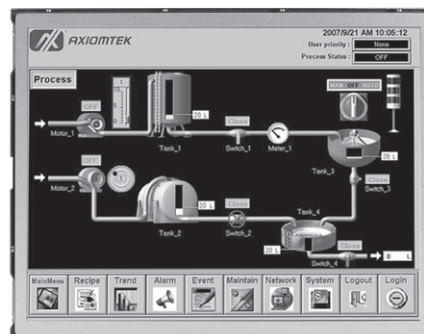
15" XGA TFT Industrial Open Frame Monitor

## Features

- 15" XGA TFT LED backlight LCD
- Resistive touchscreen with 420 nits high brightness
- Full range screw-type (locked) AC-in or 12V/24V DC-in (option)
- HDMI, DIV-D and VGA with multi-signal inputs
- Built-in speakers



▲ Side view



- |             |          |
|-------------|----------|
| 1. T/S port | 5. HDMI  |
| 2. Line-in  | 6. Power |
| 3. VGA      |          |
| 4. DVI-D    |          |

## Introduction

The P61510 is an ultra slim industrial open frame monitor, which adopts 15-inch 420 nits XGA LED backlight LCD display and supports multi-signal interfaces including DVI, VGA and HDMI. Featuring, screw-type adaptor plug design, and 12/24V DC-In means it is fit for all kinds of industrial environments. With the compact mechanism design, users can enjoy free from space constraint. It is especially suitable for POI/POS, excellent HMI and all kinds of heavy-duty industrial fields.

## Specifications

Front Bezel	Open frame monitor	
Mounting	Open frame mount, wall mount and VESA arm	
LCD Panel	Display	15" XGA TFT LCD
	Max. Resolution	1024 x 768
	Max. Colors	16.7M
	Active Area (mm)	304.128 x 228.096
	Pixel Pitch (mm)	0.297 x 0.297
	Response Time	16ms
	Backlight	LED backlight
	Backlight MTBF	30,000 hrs
	Viewing Angle (H/V)	160°/160°
	Contrast Ratio	800 (TYP.)
Brightness (cd/m <sup>2</sup> )	420 nits	
Display Control	OSD (on screen display)	
Display Mode	VGA 640 x 350 (70Hz), VGA 640 x 480 (60/72/75Hz), VGA 720 x 400 (70Hz), SVGA 800 x 600 (60/72/75Hz), XGA 1024 x 768 (60/72/75Hz)	
Input Signal	DVI-D	
	VGA	
	HDMI	
	Touchscreen: Serial RS-232 or USB interface	

## Specifications

I/O Connectors	1 x RS-232 or USB for touchscreen version 1 x DVI-D 1 x VGA 1 x HDMI 1 x Screw-type DC power input	
Power Adapter	Screw-type external AC / DC power adapter	
Power Consumption	15 W	
Touchscreen	Thickness	Resistive: 3.2 mm
	Light Transmission	Resistive: 80%
	Power Consumption	Resistive: +5V @ 100mA
	Touch Life	Resistive: 35million touches Controller interface: RS-232 D-type 9pin male connector or USB
Dimensions	335 mm (13.19") (W) x 58.5 mm (2.30") (D) x 261.5 mm (10.29") (H)	
Packing Dimensions	377.9 mm (14.88") (W) x 58 mm (2.28") (D) x 309.3 mm (12.18") (H)	
Weight (net/gross)	3.08 kg (6.79 lb)/4.58 kg (10.1 lb)	
Environment	Operating temperature: 0°C ~ +50°C (+32°F ~ +122°F) Relative humidity: 20%~90% @ 40°C, non-condensing	
Packing List	1 x VGA cable 1 x RS232 or USB cable for touchscreen (for touch version) 1 x Audio cable 1 x EU/US power cord (for AC version)	
Certificate	CE	

## Ordering Information

AC Power	Resistive (RS-232)	P61510R-AC-RS-US-EU
	Resistive (USB)	P61510R-AC-U-US-EU
	Glass	P61510N-AC-US-EU
12V/24VDC Power	Resistive (RS-232)	P61510R-DC-RS
	Resistive (USB)	P61510R-DC-U
	Glass	P61510N-DC

## Optional Accessories

5946L203800E	HDMI cable
59461713400E	DVI cable
82231770050E	Wall mount kit
E226171106	Desktop stand

## Dimensions

