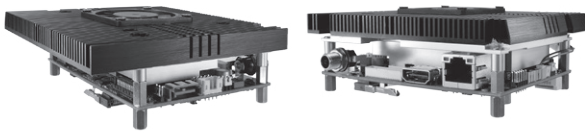


PICO512 NEW

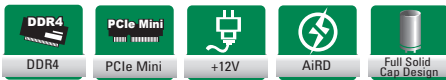
Pico-ITX SBC with 7th Gen Intel® Core™ i7/i5/i3 & Celeron® Processor, HDMI/LVDS and LAN

Features

- 7th Gen Intel® Core™ i7/i5/i3 and Celeron® processor
- 1 DDR4 SO-DIMM, up to 16GB
- 1 PCI Express Mini Cards
- Intel® AMT 11 supported



▲ Assembly view

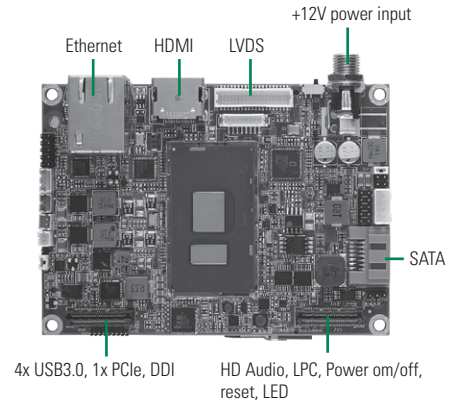


Core System

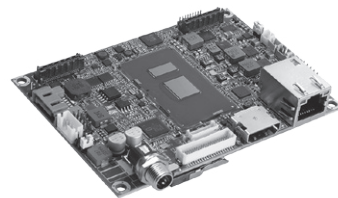
CPU	7th generation Intel® i7/i5/i3 & Celeron® processor onboard
System Memory	1 x 260-pin DDR4-2133 SO-DIMM, up to 16GB
Chipset	N/A
BIOS	AMI
SSD	N/A
Watchdog Timer	255 levels, 1~255 sec.
Expansion Interface	1 x Full-Size Mini PCI Express Mini Card with mSATA 1 x PCIe1, 1 x LPC, 1 x DDI, 4 x USB3.0, 1 x HD audio and 1 x SMBus (through expansion connector)
Battery Lithium	Lithium 3V/220mAH
Power Input	DC Jack +12V DC-in only AT Auto Power On function supported
Power Requirements	TBD
Size	100 x 72 mm
Board Thickness	1.6 mm
Temperature	-20°C ~ +70°C (-4°F ~ 158°F), operation
Relative Humidity	10% ~ 95% relative humidity, non-condensing

I/O

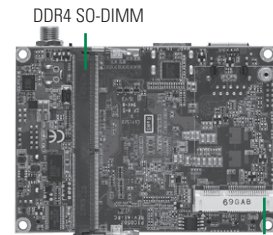
MIO	N/A
SATA	1 x SATA-600
Hardware Monitoring	Detect CPU/system temperature, voltage and fan speed
Ethernet	1 port 10/100/1000 Mbps supports Wake-on-LAN, PXE Boot ROM with Intel® i219LM
Audio	N/A
USB	1 x USB 2.0
I2C	I2C Bus for advanced monitoring/control
SMBus	N/A
Digital I/O	8 channels IN/OUT programmable
TPM	ST ST33TPM12LPC with TPM1.2 compliant (Optional)



4x USB3.0, 1x PCIe, DDI HD Audio, LPC, Power on/off, reset, LED



▲ Side view



▲ Rear view

Full-Size PCI Express Mini Card with mSATA supported

Display

Chipset	Intel® HD Graphics
Memory Size	Share System memory
Display Interface	1x HDMI 1 x LVDS; 18/24-bit single/dual channel

Packing List

Standard	Quick installation guide, User's Manual/Utility CD and accessories
-----------------	--

Accessories	
Part Number	Description
	SATA cable
	SATA power cable
	Fan cable
	USB cable
	Heatspreader
	Cooler

Ordering Information

Standard	
P/N	Description
PICO512HG-i7-7600U	Pico-ITX SBC with Intel® Core™ i7-7600U HDMI/LVDS, 1 GbE LAN, 1 USB (P/N: TBD)
PICO512HG-i5-7300U	Pico-ITX SBC with Intel® Core™ i5-7300U, HDMI/LVDS, 1 GbE LAN, 1 USB (P/N: TBD)
PICO512HG-i3-7100U	Pico-ITX SBC with Intel® Core™ i3-7100U, HDMI/LVDS, 1 GbE LAN, 1 USB (P/N: TBD)
PICO512HG-Celeron-3965U	Pico-ITX SBC with Intel® Celeron® 3965U, HDMI/LVDS, 1 GbE LAN, 1 USB (P/N: TBD)

