



2022 Q1 Investor Conference

Spokesperson
Skin Huang
May 11th, 2022





Company and Industry

Axiomtek at a Glance

To be atop of the embedded computer industry, recognized by our partners as a trusted source of reliable products and dependable services.

To offer products that are more advanced, intelligent, efficient, and safer, and help our partner to greatly increase quality of services and move towards a sustainable society and environment.



Established
/Headquarters

May 1990
/Taipei, Taiwan

Founder &
Chairman

YT Yang

CEO &
President

Albert Huang

Revenue
/Capital

\$181.8M
/\$32.6M

Facility Space
/Employees

17,095m² (HQ)
/750+

IPC Industry

Upper

- Components
- Semiconductor, Connector, PCB, Power Supply, Case, Storage....

Middle

- IPC manufacturer
- Board, Embedded System, Peripheral device



Lower

- Application
- System integration, Agent/VAR, Vertical Markets (Medical, Gaming, Transportation, Network Appliances....)

OUR Advantages

Axiomtek has experienced extraordinary growth over the past 30 years. Fueled by our passionate employees, we have leveraged decades of experience which has resulted in a vast portfolio of high value add solutions that we deliver to our trusted customers. We are committed to making long term investments to secure our place at the top of the industrial PC industry. This commitment has yielded a growing team of engineers including software, hardware, middleware and application engineers, that are second to none!



Long-Term Availability

Product Lifecycle Management and
Supply Chain Management



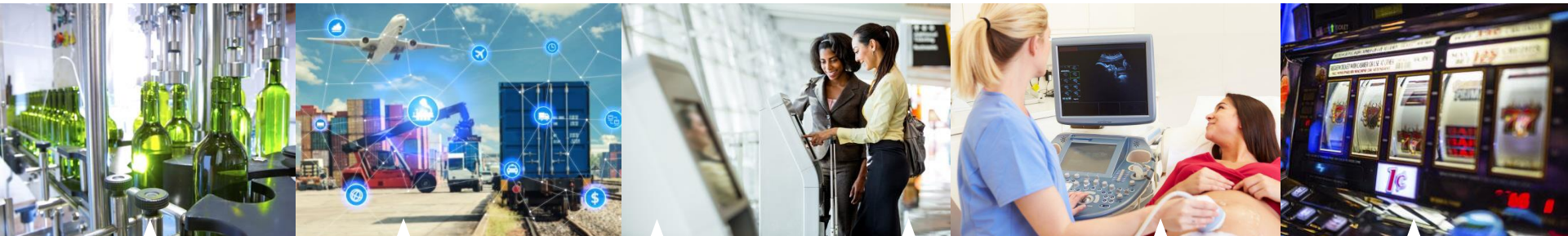
Domain- Focused Intelligent System

Design-In Service

Innovation and Fast Time-To-Market through
Axiomtek's Professional Design Engineering
Services

Domain-Focused Systems

To Enable Industry Leading Innovations



AIOT AUTOMATION

Machine Vision, HMI, Edge Computing, AMR, Industrial System

TRANSPORTATION

Surveillance & Security, PIDS, Driver Console & Management Gateway

NETWORK

IIoT Gateway, UTM, IPS/IDS, SD-WAN, Next Generation Firewall

RETAIL

Digital Signage, Interactive Kiosk, Self-Service Kiosk, IWB

MEDICAL

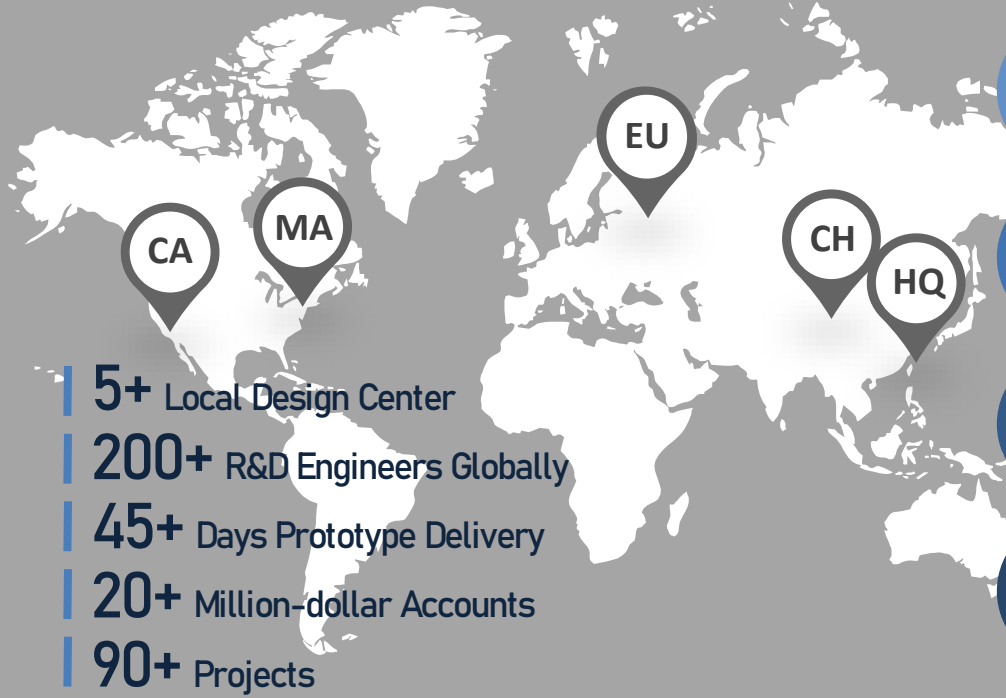
Medical Equipment & Device, Medical Imaging, AI Diagnosis

GAMING

Slot Machine, Electronic Table Game, PTS, Video Mixer



Design Engineering Services



Global Support and Service

In-house manufacturing and system assembly.
Global certifications for worldwide product development.



Diverse Industry Experience

Quick innovation on the customized application and fully-integrated simulation technology.



Project Management Service

World-class project managers take ownership of your projects from concept through mass production.



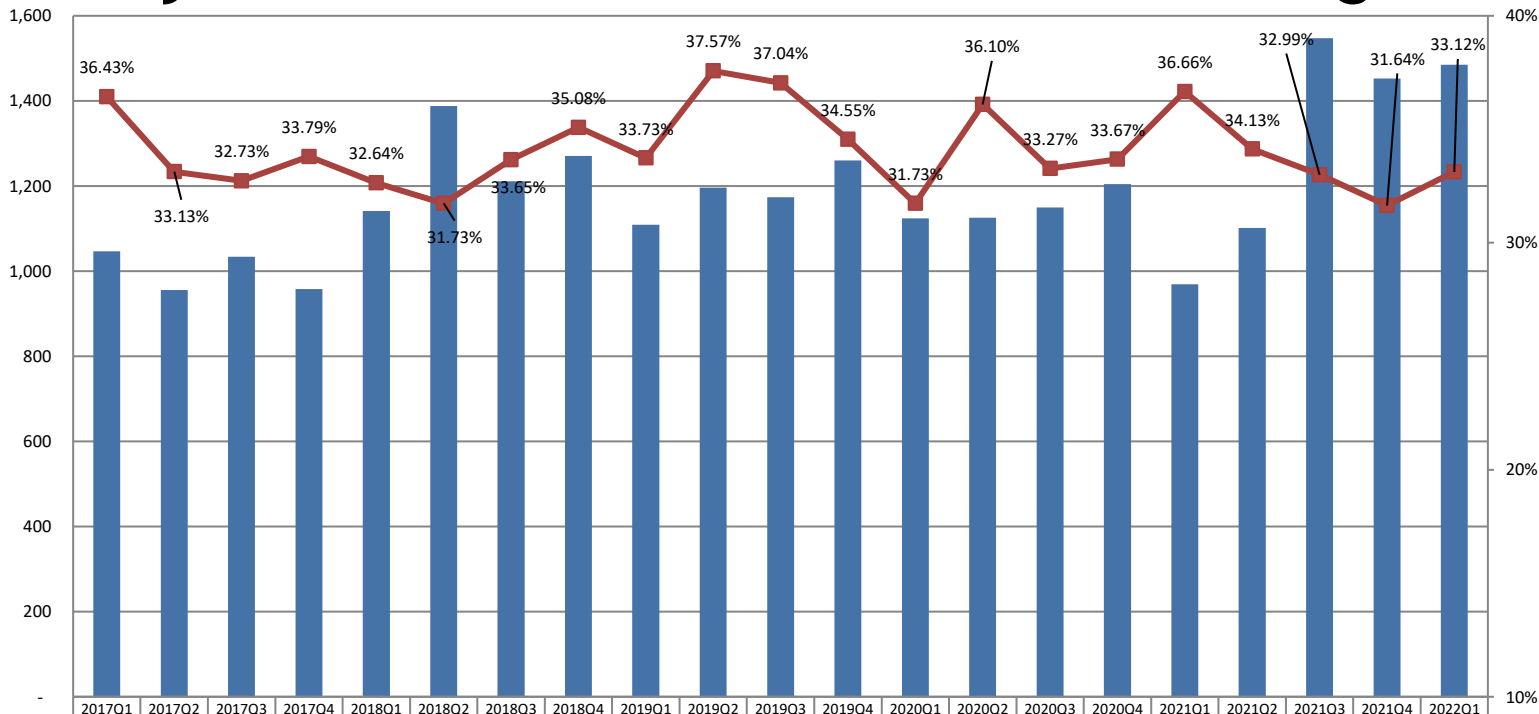
Accelerate Time-to-Market

Utilizes development resources quickly, efficiently, and within budget.

A circular inset image showing a cityscape at night with a network overlay of glowing white nodes and lines. The nodes are connected by thin white lines, forming a complex web. Some nodes are highlighted with larger, glowing icons: an airplane, a globe, a Wi-Fi symbol, a speech bubble, and an envelope. The background of the city is dark blue, with the lights of the buildings and a green park area visible.

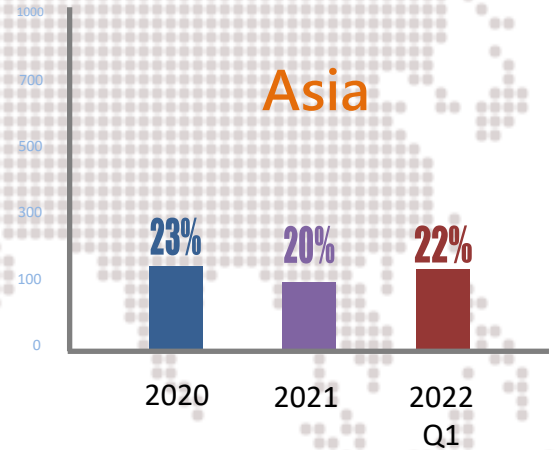
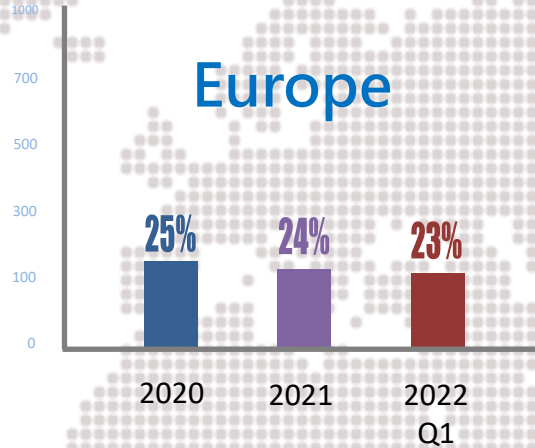
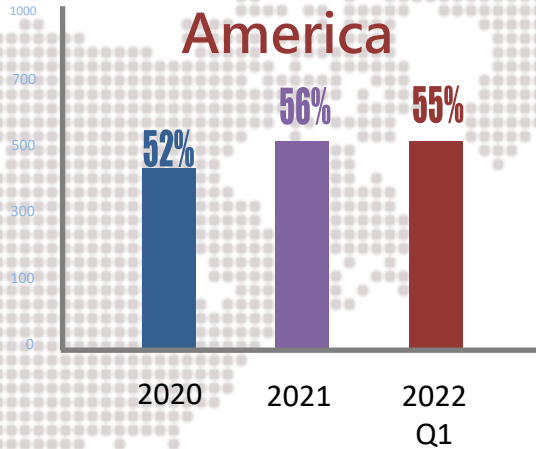
Financial Result

Quarterly Consolidated Revenue and Gross Margin

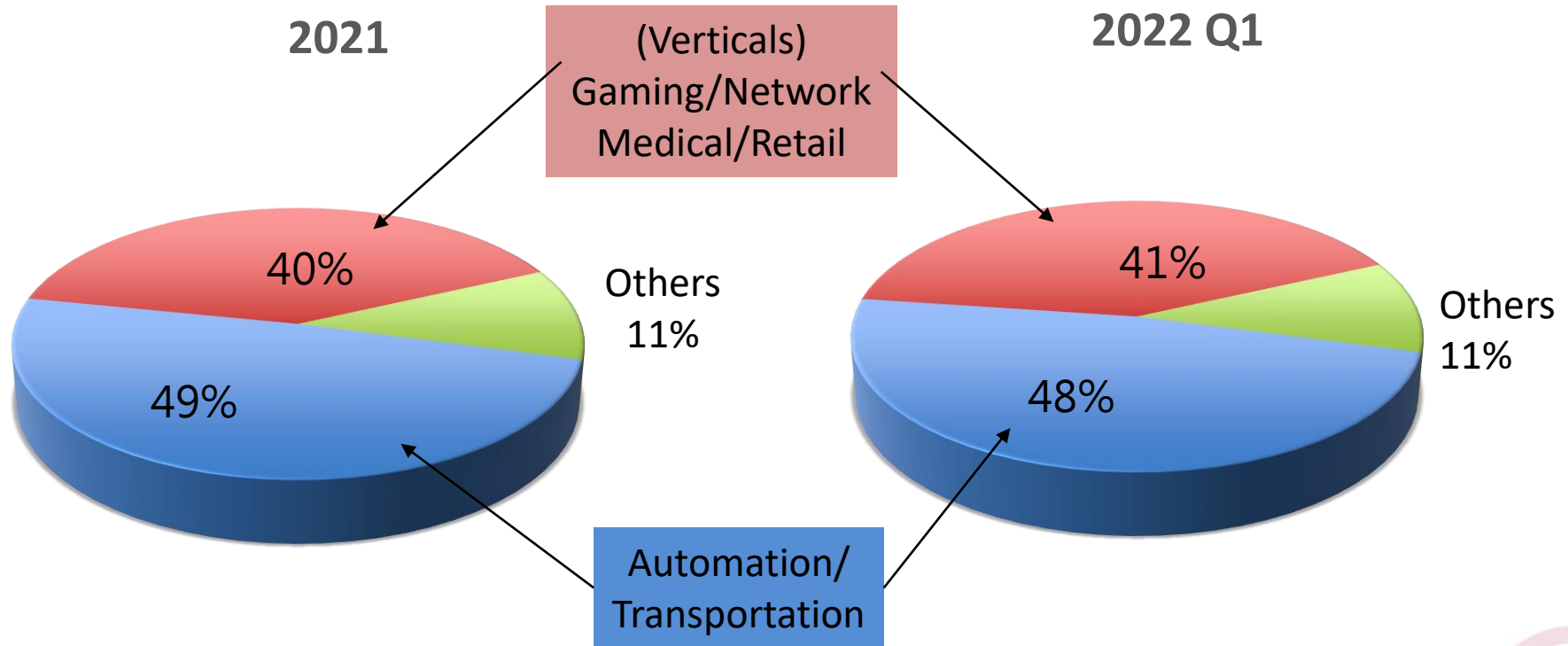


Revenue (Million)	1,047	956	1,034	958	1,141	1,388	1,211	1,270	1,109	1,196	1,173	1,260	1,124	1,125	1,149	1,204	969	1,101	1,547	1,452	1,485
Gross Margin %	36.43%	33.13%	32.73%	33.79%	32.64%	31.73%	33.65%	35.08%	33.73%	37.57%	37.04%	34.55%	31.73%	36.10%	33.27%	33.67%	36.66%	34.13%	32.99%	31.64%	33.12%
Net Profit %	2.89%	79.91%	8.84%	4.54%	7.27%	7.93%	8.08%	9.13%	10.50%	14.25%	8.63%	5.73%	5.99%	9.81%	5.30%	5.64%	12.34%	4.17%	8.78%	6.18%	9.00%
Operating Expense %	29.39%	27.75%	22.15%	27.65%	21.88%	20.46%	23.26%	23.19%	25.12%	25.63%	24.94%	24.98%	25.99%	24.55%	24.42%	24.82%	29.59%	27.67%	21.35%	25.21%	22.56%
Tax Rate	11.07%	7.48%	18.11%	18.03%	28.03%	44.28%	26.14%	27.59%	18.35%	20.97%	24.91%	30.00%	14.53%	31.12%	28.52%	22.98%	14.80%	35.57%	26.80%	8.54%	24.11%
Basic EPS	0.35	9.66	1.16	0.54	1.05	1.38	1.23	1.46	1.46	2.14	1.27	0.89	0.82	1.35	0.74	0.82	1.43	0.55	1.58	0.99	1.48

Product Revenue Breakdown by Geography



Product Revenue Breakdown by Application





Thank You